




MACKENZIE COUNTY

# SPECIAL COUNCIL MEETING

**AUGUST 2, 2023**  
**10:00 AM**

FORT VERMILION  
COUNCIL CHAMBERS

 780.927.3718

 [www.mackenziecounty.com](http://www.mackenziecounty.com)

 4511-46 Avenue, Fort Vermilion

 [office@mackenziecounty.com](mailto:office@mackenziecounty.com)



**Mackenzie County**



**MACKENZIE COUNTY  
SPECIAL COUNCIL MEETING**

**Wednesday, August 2, 2023  
10:00 a.m.**

**Fort Vermilion Council Chambers**

**Fort Vermilion, Alberta**

**AGENDA**

			Page
<b>CALL TO ORDER:</b>	1.	a) Call to Order	
<b>AGENDA:</b>	2.	a) Adoption of Agenda	
<b>ADOPTION OF PREVIOUS MINUTES:</b>	3.	a) None	
<b>CLOSED MEETING:</b>		<i>Freedom of Information and Protection of Privacy Act Division 2, Part 1 Exceptions to Disclosure</i>	
	4.	a) None	
<b>TENDERS:</b>	5.	a) None	
<b>PUBLIC HEARINGS:</b>	6.	a) None	
<b>DELEGATIONS</b>	7.	a) None	
<b>GENERAL REPORTS:</b>	8.	a) None	
<b>AGRICULTURE SERVICES:</b>	9.	a) Declaring Municipal Agricultural Disaster	5
<b>COMMUNITY SERVICES:</b>	10.	a) None	
<b>FINANCE:</b>	11.	a) None	
<b>PROJECTS &amp; INFRASTRUCTURE:</b>	12.	a) None	
<b>OPERATIONS:</b>	13.	a) None	

- |                                           |     |    |                                                                                                    |    |
|-------------------------------------------|-----|----|----------------------------------------------------------------------------------------------------|----|
| <b>UTILITIES:</b>                         | 14. | a) | None                                                                                               |    |
| <b>PLANNING &amp;<br/>DEVELOPMENT:</b>    | 15. | a) | None                                                                                               |    |
| <b>ADMINISTRATION:</b>                    | 16. | a) | None                                                                                               |    |
| <b>COMMITTEE OF THE<br/>WHOLE ITEMS:</b>  | 17. | a) | None                                                                                               |    |
| <b>COUNCIL<br/>COMMITTEE<br/>REPORTS:</b> | 18. | a) | None                                                                                               |    |
| <b>INFORMATION /<br/>CORRESPONDENCE:</b>  | 19. | a) | Information/Correspondence                                                                         | 27 |
| <b>NOTICE OF MOTION:</b>                  | 20. | a) | None                                                                                               |    |
| <b>NEXT MEETING<br/>DATES:</b>            | 21. | a) | Committee of the Whole Meeting<br>August 15, 2023<br>10:00 a.m.<br>Fort Vermilion Council Chambers |    |
|                                           |     | b) | Regular Council Meeting<br>August 16, 2023<br>10:00 a.m.<br>Fort Vermilion Council Chambers        |    |
| <b>ADJOURNMENT:</b>                       | 22. | a) | Adjournment                                                                                        |    |



**Mackenzie County**

# REQUEST FOR DECISION

<b>Meeting:</b>	<b>Special Council Meeting</b>
<b>Meeting Date:</b>	<b>August 2, 2023</b>
<b>Presented By:</b>	<b>Caitlin Smith, Director of Planning &amp; Agriculture</b>
<b>Title:</b>	<b>Declaring Municipal Agricultural Disaster</b>

## **BACKGROUND / PROPOSAL:**

Drought Conditions have been devastating this year as there has only been an average of 5-7 centimeters of precipitation since May, 2023 and under 1 centimeter during crucial growing periods.

Rural Municipalities of Alberta (RMA) has developed a guideline for Rural Municipalities to declare a Municipal Agricultural Disaster.

A municipal declaration of an agricultural disaster will not influence a provincial declaration or access funding supports. Municipal declarations bring awareness to an issue in a specific area of the province, but they do not trigger a provincial declaration or access to any funding to support the issue.

As per the RMA guideline, there are questions that should be considered to enable consistent and thorough communications. These include;

- Does the state of agricultural disaster cover the entire area or just a region within the municipality? – *While there are pockets scattered around the municipality that received more precipitation, over all the entire agricultural area has been affected.*
- Does the agricultural disaster cover all agriculture in the municipality or only certain commodity products? *The disaster has devastating crops, pastures and hay land.*
- Has the municipality used AFSC data for the local areas to assess the level of impact being experienced?

- Has the municipality contacted producer groups and associations to discuss impacts being experienced? *Administration has reached out to several producers, and has spoken with the Grazing Association as well.*
- Does the municipality have data to support the decision? (ex. Completed condition assessment toss and municipal mapping) *See attached map.*

**OPTIONS & BENEFITS:**

N/A

**COSTS & SOURCE OF FUNDING:**

None.

**COMMUNICATION / PUBLIC PARTICIPATION:**

The County will provide updates to the public through the Mackenzie County website, social media and local newspaper.

**POLICY REFERENCES:**

N/A

**RECOMMENDED ACTION:**

Simple Majority       Requires 2/3       Requires Unanimous

That a letter be sent to the Minister of Agriculture and Irrigation, the Premier, and MLA regarding the drought conditions in Mackenzie County.

# **A Guide for Declaring Municipal Agricultural Disasters in Alberta**

Prepared by the Rural  
Municipalities of Alberta

# Contents

- About This Guide.....3
- Condition Statement Tool Overview .....4
- Technical Information to Support Data .....5
- Government of Alberta Declaration .....6
- Municipal Communications Process.....7
- Appendix A: Condition Statement Tool .....8
- Appendix B: Municipal Agricultural Disaster Declaration Template .....10
- Appendix C: Drought and Excessive Moisture Advisory Group.....11
- Acknowledgments.....12



## About This Guide

Steps used towards declaring a municipal agricultural disaster can bring awareness to a developing situation, inform residents, industry and provincial and federal governments and enable collaboration with impacted producer groups.

This guide is intended to be used as a tool to enable municipalities to use informed decision making process prior to making a formal declaration of agricultural disaster as conditions evolve. **Municipal declarations do not automatically trigger access to increased funding programs, provincially or federally.**

A number of elements drove the creation of this guide, including:

- Past drought and excessive moisture experiences impacting agricultural production and crop yields,
- 2015 drought which resulted in a provincial declaration and multiple municipal declarations,
- Discussion stemming from the provincial Drought and Excessive Moisture Advisory Group (DEMAG) whose mandate is to provide advice and recommendations to complement government actions on drought and excessive moisture related issues affecting Alberta's agricultural producers in Alberta and to advise and provide recommendations to government on long-term strategies for mitigating the effects of drought and excessive moisture. More information regarding DEMAG is included in Appendix C.

## Purpose of the Guide:

The purpose of the Guide is to promote a consistent mechanism for data collection and monitoring to support municipal decision making to guide agricultural disaster declarations.

Through the use of information provided in the Guide, municipalities can bring awareness to a situation as it is developing and ensure all levels of government and local residents are aware of the situation, without immediately declaring it as a "disaster."

The use of this guide is intended as a source of information that will allow data comparisons within a municipality year after year.

The Guide provides:

- Directions for consistent and clear messaging
- Identification of tools available to arrive at condition statement
- Access to technical data to support condition statement
- Timeline documentation of conditions
- The ability to modify condition statements due to a change in conditions
- An explanation of the differences between a condition statement versus a provincial declaration of agricultural disaster
- A recommendation as to when a municipal declaration should be made

- A communications guide noting key parties to notify

## Condition Statement Tool Overview

The Condition Statement Tool is intended to provide a tracking mechanism that will enable data-driven municipal decision making where agriculture production is impacted by natural causes.

Utilizing data available through Agriculture Financial Services Corporation (ASFC) (ex. crop reports available at a regional level) and/or municipal resources such as agricultural fieldmen, the condition statement tool can be used to highlight and track the percentage of crops in poor condition. The use of a colour-coded chart demonstrates a snapshot of conditions at a given time, and includes identification of the size of area impacted (in hectares).

Municipalities are encouraged to attach a map highlighting the impacted area(s) where possible.

It is advisable to assess conditions through this tool every two to three weeks to monitor and document any changes prior to making a formal declaration. It is important to note that improved conditions can result in a declaration being lifted.

The Condition Statement Tool is available in Appendix A for use and a sample is provided below:

Date:	July 7, 2015					
Municipality:	County of RMA					
Total Area Impacted:	324 seeded hectares					
Map Included:	No					
Next Report Due:	July 21, 2015					
	Ranking	Drought	Excessive Moisture	Floods	Pests	Hail
Annuals Impacted (% rated poor):						
Cereals		13% poor				
Oil Seed					26% poor	
Others						
Perennials Impacted (% rated poor):						
Tame Hay				55% poor		

Tame Pasture						
Native Pasture						
Other: (please indicate)						

Legend: % of crop (in hectares) rated 'poor':

	0 – 10%	Crops near normal and above
	10% - 25%	Expected diminished crop yields
	25% - 50%	Pending disaster
	50% or higher	Definite disaster
	No impacts being experienced	

## Technical Information to Support Data

There are a number of tools available that supply data municipalities can use in assessing their local conditions and utilizing the condition assessment tool. Click on the hyperlinks provided for access to information.

### Agriculture and Forestry

Alberta Agriculture and Forestry houses significant data sources that municipalities can utilize, including:

- [Instructions for Accessing Precipitation Data from Alberta Agriculture and Forestry](#)
- [Alberta Climate Information Services](#)
- [Alberta Climate and Atlas Maps](#)
- [Agriculture and Forestry Climate Services Staff Resources](#)
- [Agricultural Moisture Situation Update](#)

### Agriculture Financial Services Corporation (AFSC)

AFSC can assist municipal districts and counties when they are experiencing drought or excessively wet conditions. AFSC provides information through the following mechanisms:

- *Crop Reports*: AFSC senior adjusters report on crop conditions every two weeks from emergence until harvest is complete. These reports provide information at the county or municipal district level and are available on the AFSC website. This information can be presented in more detail

during severe dry or wet conditions, for example maps that show the percent of crops rated poor relative to previous years.

- *Insurance Program Response*: Detailed information on how AFSC's existing insurance products respond to a specific conditions are made available on the AFSC website. This would include options for putting crops to an alternate use when crops are deteriorating and there is a shortage of feed in an area.
- *AgriStability Response*: How AgriStability responds can be posted on the AFSC website along with procedures for obtaining an advance under this program.
- *AgriRecovery Process*: AFSC along with Agriculture & Forestry staff can provide municipalities with detailed information on what is required to trigger an AgriRecovery response.
- Information on accessing Environment Canada data:
  - [Instructions for Accessing Precipitation Data](#)
  - [Instructions for Accessing Historical Radar Data](#)

#### **Municipal Information:**

- [RMA](#)
- Association of Alberta Agricultural Fieldmen ([AAAF](#))

## **Government of Alberta Declaration**

### **The Role of AFSC**

Agriculture Financial Services Corporation (AFSC) is a provincial Crown corporation that provides farmers, agribusinesses and other small businesses with loans, crop insurance and farm income disaster assistance. AFSC expenditures are consolidated into the provincial budget and the provincial budgeting process includes requirements for ministries and Crown corporations to live within budgeted expenditures, meaning that departments or Crown corporations cannot spend more than what has been budgeted for.

AFSC forecasts annual revenues that will be gained through premiums and estimates expenditures to pay out indemnities. AFSC provides those budget estimates to the Government of Alberta for inclusion into the provincial budget. If indemnities exceed budget amounts, AFSC needs to access reserve funds and the remainder of premiums as expenditures. This requires a formal process through the Treasury Board.

### **Provincial Declaration**

In order to access additional funds the Government of Alberta must declare a disaster to access those funds for claim payments. This decision is made by Cabinet and is informed by data and analytical information provided by AFSC and Alberta Agriculture and Forestry. This declaration triggers a financial transaction through the Treasury Board to enable AFSC access to reserve funds.

### **Municipal Role**

A common misperception is that a municipal declaration of an agricultural disaster will influence a provincial declaration or access to funding supports. This is simply not the case. Municipal declarations bring awareness to an issue in a specific area of the province, but they do not trigger a provincial declaration or access to any funding to support the issue.

Municipalities can work with their local agriculture industries or industry/producer organizations to communicate concerns and assess challenges being experienced.

### **Municipal Communications Process**

The RMA assists AFSC and the Government of Alberta in distributing information to municipalities and Ag Service Board members. Providing a central communication hub for information sharing improves understanding of the challenges being experienced and connecting impacted municipalities with appropriate resources and support.

Before a municipality formally declares a state of agriculture disaster, a number of questions should be considered to enable consistent and thorough communications. These include:

- Does the state of agricultural disaster cover the entire area or just a region within the municipality?
- Does the agriculture disaster cover all agriculture in the municipality or only certain commodity products?
- Has the municipality used AFSC data for the local area to assess the level of impact being experienced?
- Has the municipality contacted producer groups and associations to discuss impacts being experienced?
- Does the municipality have data to support this decision (ex. completed condition assessment tool(s) and municipal mapping)?

Once a declaration of agriculture disaster has been made, the municipality should provide information regarding the details of the agriculture disaster to the following organizations for access to consistent information:

- Government of Alberta (Agriculture and Forestry)
- AFSC
- RMA

## Appendix A: Condition Statement Tool

Utilizing data available through Agriculture Financial Services Corporation (ASFC) (ex. crop reports available online at a regional level and/or municipal resources such as agricultural fieldmen, the condition statement tool can be used to highlight and track the percentage of crops in poor condition.

The use of a colour-coded chart demonstrates a snapshot of conditions at a given time, and includes identification of the size of area impacted (in seeded hectares where applicable).

Municipalities are encouraged to attach a map highlighting the impacted area(s) where possible. It is advisable to assess conditions throughout the growing season to monitor and document any changes.

Date:						
Municipality:						
Total Area Impacted:						
Map Included:						
Next Report Due:						
	Ranking	Drought	Excessive Moisture	Floods	Pests	Hail
Annuals Impacted (% rated poor):						
Cereals						
Oil Seed						
Others						
Perennials Impacted (% rated poor):						
Tame Hay						
Tame Pasture						
Native Pasture						
Other: (please indicate)						

Legend: % of crop (in hectares) rated 'poor':

	0 – 10%	Crops near normal and above
	10% - 25%	Expected diminished crop yields
	25% - 50%	Pending disaster
	50% or higher	Definite disaster
	No impacts being experienced	

## Appendix B: Municipal Agricultural Disaster Declaration Template

### Municipal Agricultural Disaster Declaration

(attach all relevant data and completed condition statements to support declaration)

<b>Municipality:</b>	
<b>Type of Agriculture Disaster:</b>	[Type of disaster experienced and impact, such as drought conditions impacting 60% of cereal yields]
<b>Stages of Disaster Declaration:</b>	[Document the stages on the spectrum of the agriculture disaster and, as best as possible, the dates at which each stage was met]
<b>Data to support:</b>	[Insert or reference the data used to justify the state of agriculture disaster]
<b>Level of impact:</b>	[Describe the areas and commodity types impacted by the agriculture disaster]
<b>Communication process:</b>	[Outline the stakeholders to be contacted by the municipality following the declaration of agriculture disaster including Government of Alberta ministries, AFSC, RMA, and producer associations]
<b>Other information:</b>	



## Appendix C: Drought and Excessive Moisture Advisory Group

The Drought and Excessive Moisture Advisory Group (DEMAG) is comprised of appointed representatives of key stakeholder agencies:

- Agri-Environmental Services Branch of Agriculture and Agri-Food Canada
- Agriculture Financial Services Corporation (AFSC)
- Alberta Agriculture and Forestry
- Alberta Association of Agricultural Fieldmen (AAAF)
- Alberta Association of Municipal Districts and Counties (RMA)
- Alberta Environment and Parks
- Crop sector
- Irrigated Crop sector
- Livestock sector
- Wildrose Agricultural Producers Association

Mandate:

- To provide consistent and consolidated advice and recommendations to complement government actions on drought and excessive moisture related issues affecting the agricultural producers in Alberta.
- To advise and provide recommendations to government on long-term strategies for mitigating the effects of drought and excessive moisture.

Key Duties and Responsibilities of DEMAG:

- Facilitate two-way communication that is effective, timely, respectful and clear.
- Recommend extension activities and provide input to drought and excessive moisture related and related risk management information for key stakeholder groups.
- Serve as a formal communication connection between industry and government, and from government back to industry.
- Provide recommendations and policy advice to the Minister of Agriculture and Forestry for effective, fiscally responsible drought and excessive moisture preparedness, monitoring and reporting, and response actions.
- Actively participate in long-term strategic planning for future drought conditions in Alberta; for example, long-term water management and production/crop choices.
- Work with industry organizations to identify how to best assist producers in preparing for and coping with drought and excessive moisture, and develop these discoveries into recommendations.
- Oversee the implementation of the Agriculture Drought Risk Management Plan (ADRMP), and provide advice on and input during the ADRMP's review and evaluation.

## **Acknowledgments**

The RMA would like to thank the following organizations for their contributions in developing this guide:

- Agriculture Financial Services Corporation
- Alberta Association Agriculture Fieldmen
- Alberta Agriculture and Forestry

# Agricultural Moisture Situation Update

## July 19, 2023

### Synopsis

Since the last report (July 12, 2023) precipitation activity was concentrated between townships 35 to 75, with localized rainfall occurring near the B.C. border in the County of Northern Lights and Clear Hills County on July 17 and 18 (**Map 1**). Northern Sunrise County, Municipal District (M.D.) of Opportunity, Wood Buffalo I.D & R.M., Mackenzie County, M.D. of Spirit River, and M.D. of Fairview received 20 to 50 mm of precipitation for this seven day period. Forecasts for the province continue to predict significant rainfall events for the coming week and with this we will see cooler temperatures, although these conditions may be short lived and these storms are likely to hit variably throughout Alberta.

### Recent precipitation patterns over the past 60 days

For the period of May 21 to July 19 the Northwest and Southeast bordering corners have missed out on much of the rain that was received in the Peace, North West, and Northern sections of the North East (**Map 2**). Most of the rainfall from this 60 day span was recorded in M.D of Greenview, M.D. of Big Lakes, Woodlands County, Yellowhead County, Clearwater County, I.D. of Jasper, and Brazeau County in excess of 300 mm whereas Mackenzie County and M.D. of Taber have only received less than 25 mm. Recent precipitation events over the last 60 days have shown just how variable the precipitation received by the province has been this year (**Map 3**). Climate monitoring stations within the Alberta Climate Information Service network have collected data to indicate we have both once in 50 year dry and once in 50 year wet conditions. Although we have experienced more rainfall recently, it has unfortunately come too late for some areas of the province.

### Soil moisture reserves as of July 19, 2023

Soil moisture reserves current of this growing season (**Map 4**) continue to express the variability from recent precipitation events with much of the agricultural areas with 60 mm to upwards to 160 mm available moisture to a depth of 120 cm. The lower South East corner of the

province has significantly less soil moisture reserves as of July 19 with areas deprived of moisture at reserves ranging from 20 mm to 40 mm available. Historical average soil moisture levels derived from the 1961-2022 period are shown in **Map 5** give a better picture of just how dry the agricultural areas of the province have been, and more rural municipalities have been added to the agricultural disaster list in recent weeks.

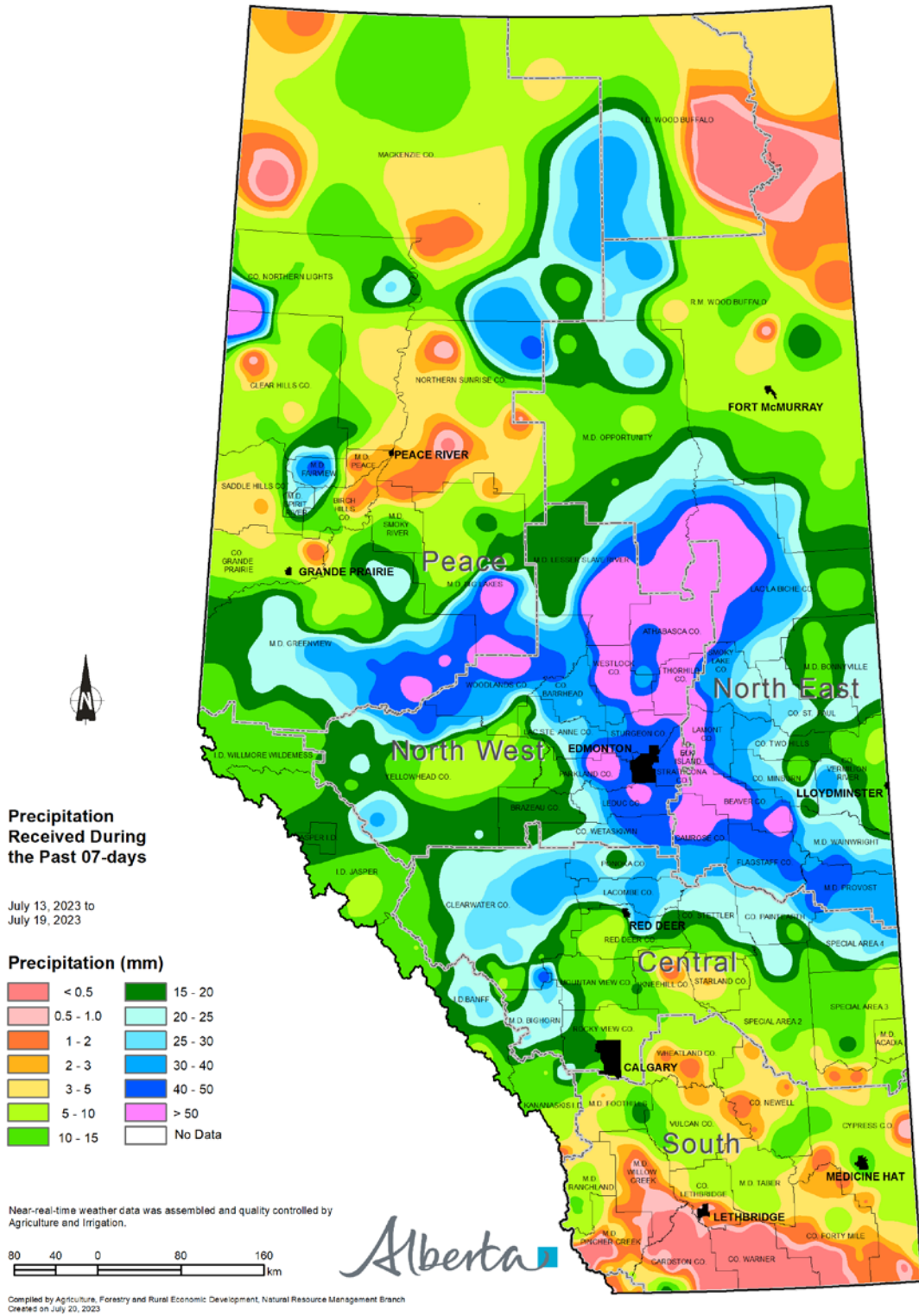
### Growing season precipitation as of July 19, 2023

Looking at the bigger picture of the 2023 growing season precipitation accumulation relative to long term normal (**Map 6**) it is clear many areas of the province have been very dry. Although the North West and North East indicate near normal and wetter conditions this is only due to recent precipitation events. These recent storm events have hit heavy in the North West with accumulations of over 360 mm for our current growing season (**Map 7**). Areas of Mackenzie County, as well as the dry Southeast pocket of the province, continue void of precipitation.

### Perspective

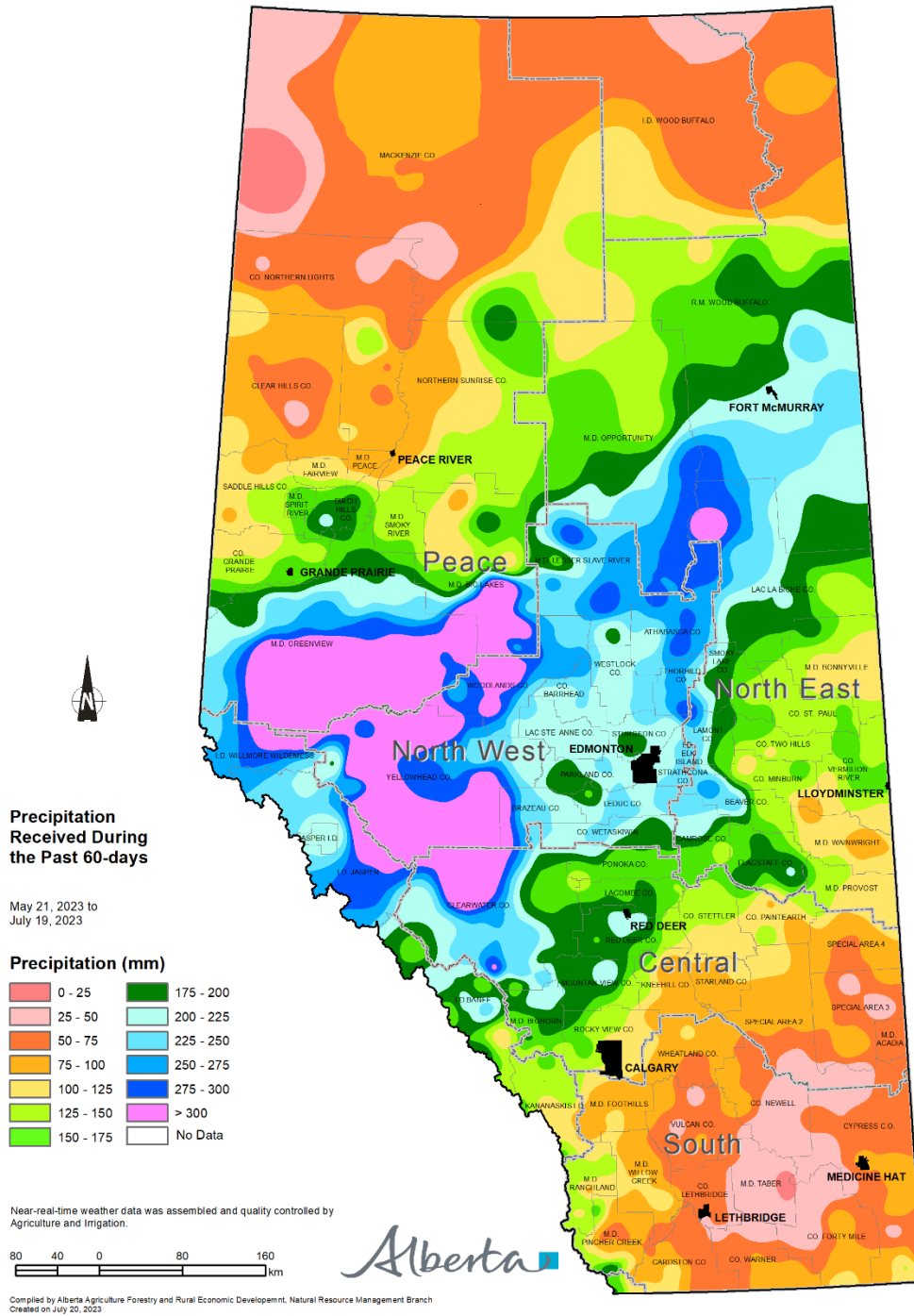
Friday thunderstorms are expected to hit the Rocky Mountains and sweep East through the foothills beginning in the late afternoon, a heavier system expected to bring over 20 mm/h is forecast for the North West and Peace on Saturday in the morning with more widespread activity across the province to continue over the weekend.

# Map 1



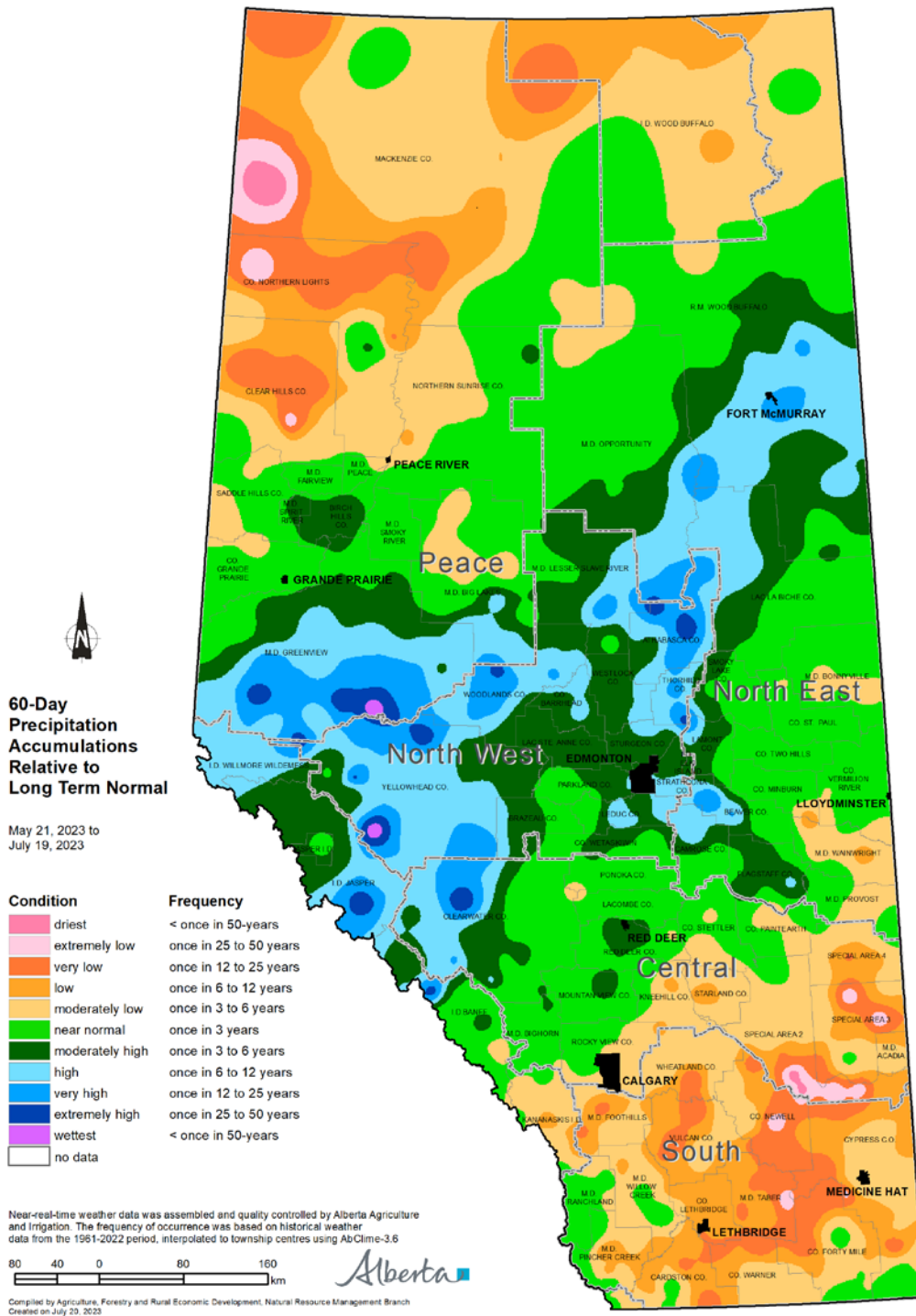
Visit [weatherdata.ca](http://weatherdata.ca) for additional maps and meteorological data

# Map 2



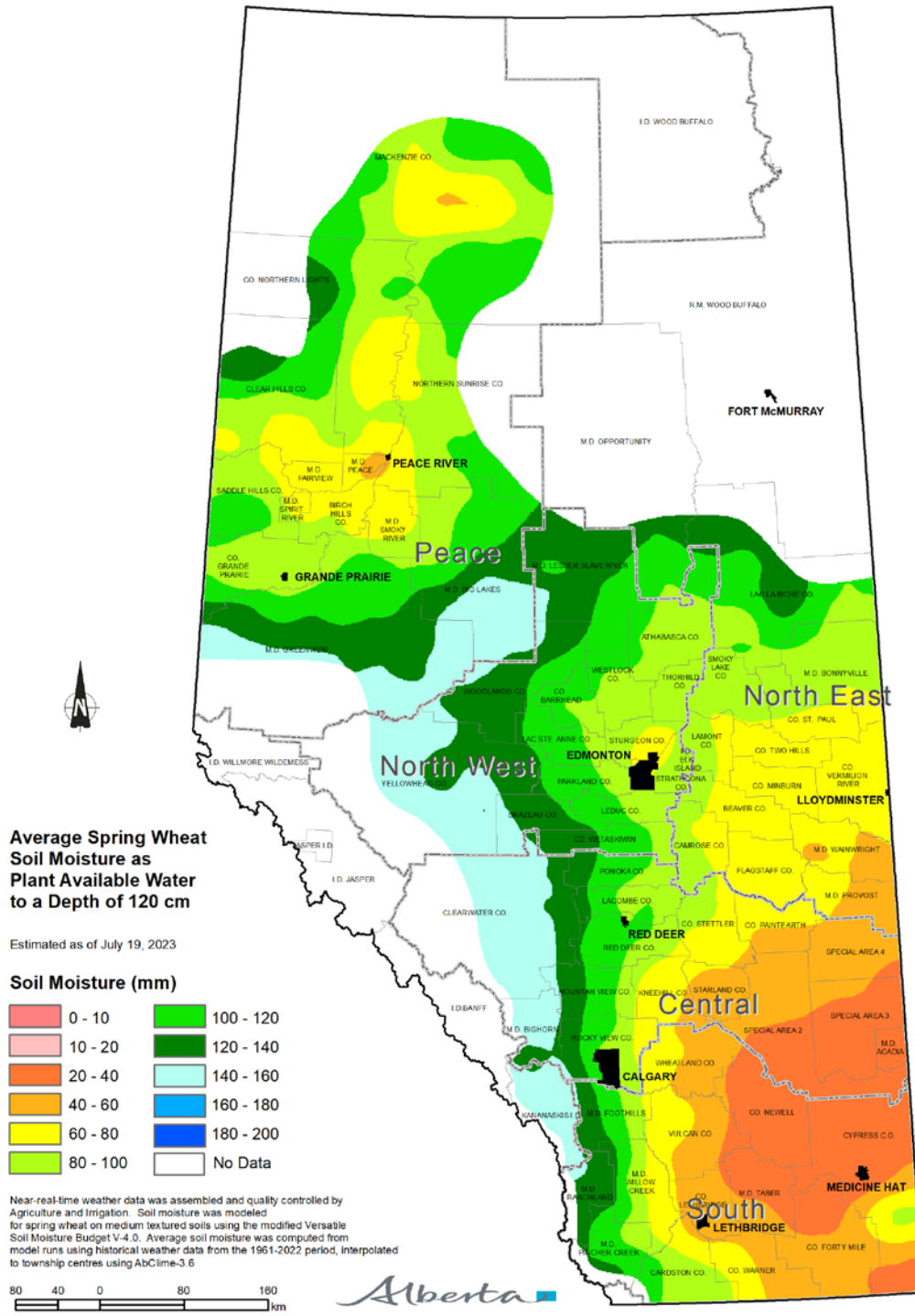
Visit [weatherdata.ca](http://weatherdata.ca) for additional maps and meteorological data

# Map 3



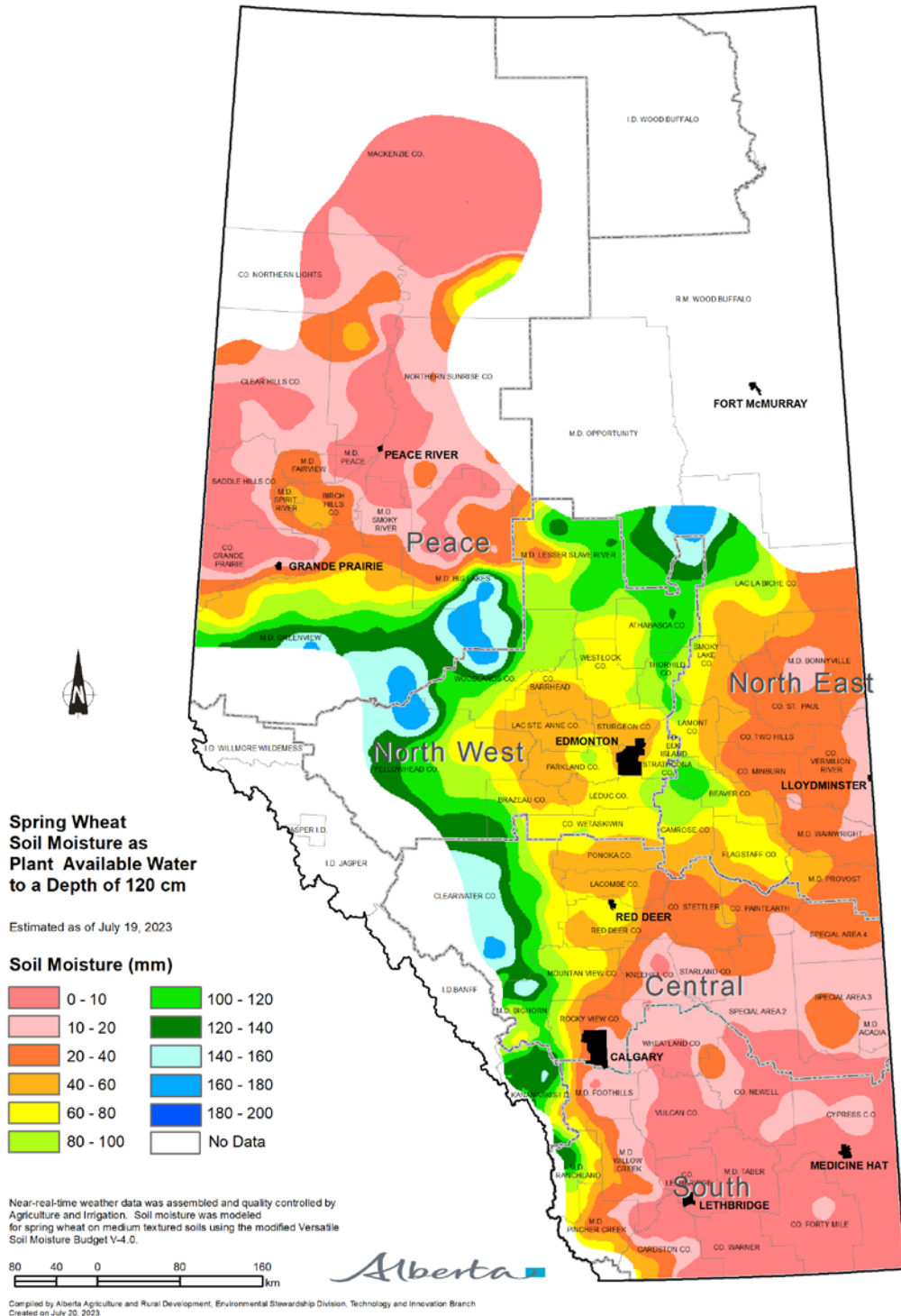
Visit [weatherdata.ca](http://weatherdata.ca) for additional maps and meteorological data

# Map 4



Visit [weatherdata.ca](http://weatherdata.ca) for additional maps and meteorological data

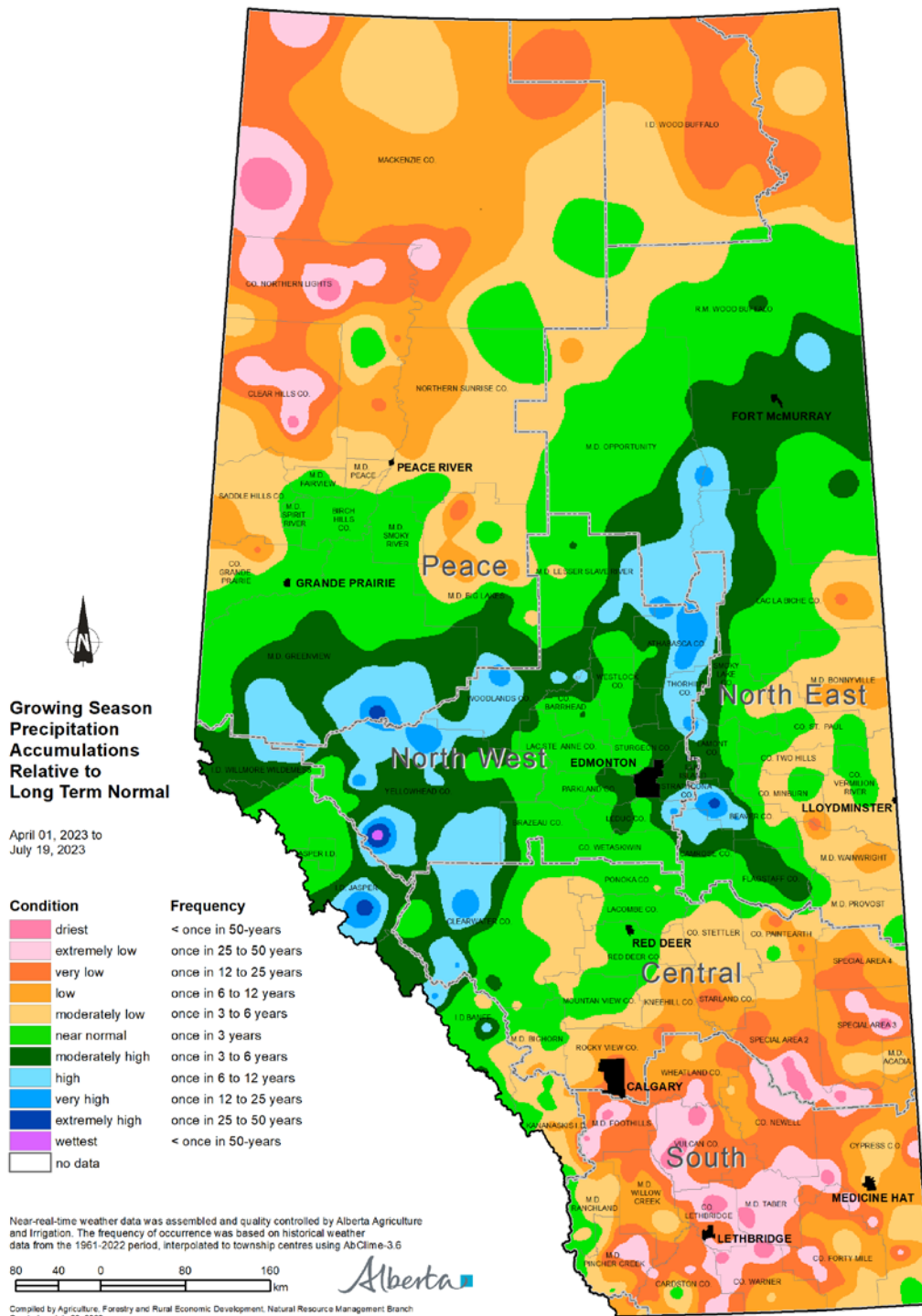
# Map 5



Visit [weatherdata.ca](http://weatherdata.ca) for additional maps and meteorological data

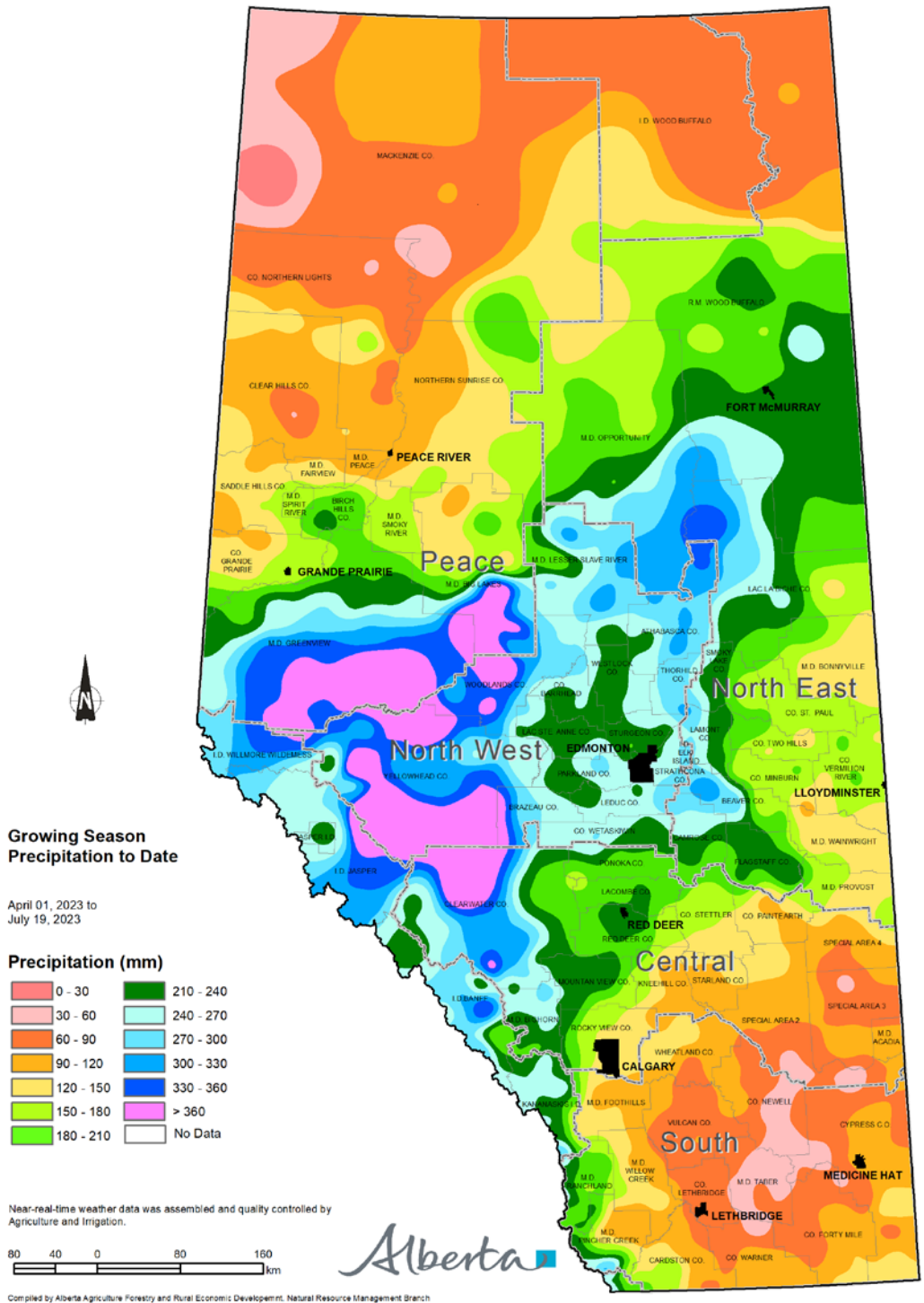


# Map 6



Visit [weatherdata.ca](http://weatherdata.ca) for additional maps and meteorological data

# Map 7



Visit [weatherdata.ca](http://weatherdata.ca) for additional maps and meteorological data



**Mackenzie County**

# REQUEST FOR DECISION

<b>Meeting:</b>	<b>Special Council Meeting</b>
<b>Meeting Date:</b>	<b>August 2, 2023</b>
<b>Presented By:</b>	<b>Byron Peters, Interim Chief Administrative Officer</b>
<b>Title:</b>	<b>Information/Correspondence</b>

## **BACKGROUND / PROPOSAL:**

The following items are attached for your information, review, and action if required.

- 2023-07-05 Special Areas Board – Additional Support Required for Agricultural Producers – Special Area No. 2, 3, & 4
- 2023-07-20 County of Stettler No. 6 – Feed and Transportation Assistance Programs for Alberta Ag Disaster Areas
- 2023-07-20 County of Stettler No. 6 – Letter of Support – Special Areas Board request for additional supports

## **OPTIONS & BENEFITS:**

N/A

## **COSTS & SOURCE OF FUNDING:**

N/A

## **COMMUNICATION / PUBLIC PARTICIPATION:**

N/A

**POLICY REFERENCES:**

N/A

**RECOMMENDED ACTION:**

Simple Majority       Requires 2/3       Requires Unanimous

That the information/correspondence items be accepted for information purposes.



# County of Stettler No. 6

Box 1270  
6602 – 44 Avenue  
Stettler, Alberta T0C 2L0  
T:403.742.4441 F: 403.742.1277  
[www.stettlercounty.ca](http://www.stettlercounty.ca)

---

July 20, 2023

Honourable RJ Sigurdson  
Minister of Agriculture and Irrigation  
229 Legislature Building  
10800-97 Avenue  
Edmonton, AB T5K 2B6

Dear Minister Sigurdson,

**RE: Letter of Support - Special Areas Board request for additional supports**

We are writing to support Special Area's July 5, 2023 letter requesting your Ministry's support in working with AFSC to ensure agricultural producers can put insured crops, including hay, to alternate use on a timely basis.

We echo the Special Areas Board's request to increase Low Yield Allowance from three bushels up to seven bushels if the crop is going to be used as grazing or feed for livestock.

We second the request to have producers' yields, in a year declared an agricultural disaster, not added to that producers' long-term average.

We thank you for your consideration of our producers dealing with impossible conditions this year.

Sincerely,

A handwritten signature in black ink that reads "Larry Clarke". The signature is fluid and cursive.

Larry Clarke  
REEVE

ENCL (1)

CC

Honourable Nate Horner, MLA for Drumheller-Stettler

President of Treasury Board and Minister of Finance

Honourable Ric McIver, Minister of Municipal Affairs

Honourable Damien Kurek, Member of Parliament for Battle River-Crowfoot

Mr. Darryl Kay, Chief Executive Officer, AFSC

Ms. Kelly Smith-Fraser, Board Chair, Agriculture Financial Services Corporation

Mr. Paul McLauchlin, President, Rural Municipalities of Alberta

RMA Member Municipalities

Mr. Jordan Christianson, Chair, Special Areas Board



# County of Stettler No. 6

Box 1270  
6602 – 44 Avenue  
Stettler, Alberta TOC 2L0  
T:403.742.4441 F: 403.742.1277  
[www.stettlercounty.ca](http://www.stettlercounty.ca)

July 20, 2023

Honourable RJ Sigurdson  
Minister of Agriculture and Irrigation  
229 Legislature Building  
10800-97 Avenue  
Edmonton, AB T5K 2B6

Dear Minister Sigurdson,

## **RE: Feed and Transportation Assistance Programs for Alberta Ag Disaster Areas**

The County of Stettler No. 6 declared an Agricultural Disaster on Wednesday, June 14, 2023 at their Regular Council Meeting.

We gratefully acknowledge the drought support so far provided in the form of a Temporary Livestock Water Assistance Program, which assists producers who have an urgent need for water for livestock and poultry.

Heading into mid-summer, our agricultural producers who provide a valuable commodity to Canada are struggling to find enough affordable feed in our region. Producers are searching beyond normal regional boundaries in order to provide adequate feed for today and for the coming fall, winter and spring.

Council for the County of Stettler No. 6 respectfully requests additional assistance for producers in the form of a feed and transportation assistance program, to compensate Alberta producers who are affected by drought, for extraordinary feed costs.

Additionally, we are seeking expanded mental health supports be advertised and made available to all producers, highlighted in areas of Agricultural Disaster. Our citizens, friends and neighbors are struggling with the additional stresses associated with an uncertain future and a threatened livelihood.

Many producers who may right now be making the difficult decision to cull herds due to lack of feed availability and affordability, are of the age they may not even consider rebuilding their herds at this stage of their life. Younger farmers and producers may simply not be able to afford to rebuild after devastating business losses. There is no doubt this will have a trickle-down effect on our food chain, affecting our entire nation and the export industry.

We humbly request more support for our region, and others who are facing the same dire situation. We thank you in advance for your consideration of additional programming to assist Alberta's agricultural industry as they face tremendous hurdles and a very uncertain future.

Sincerely,

A handwritten signature in black ink, appearing to read "Larry Clarke". The signature is fluid and cursive, with the first name "Larry" written in a larger, more prominent script than the last name "Clarke".

Larry Clarke  
REEVE

CC

Honourable Nate Horner, MLA for Drumheller-Stettler,

President of Treasury Board and Minister of Finance

Honourable Ric McIver, Minister of Municipal Affairs

Honourable Pete Guthrie, Minister of Infrastructure

Honourable Marie-Claude Bibeau, Minister of Agriculture and Agri-Food

Honourable Damien Kurek, Member of Parliament for Battle River-Crowfoot

Honourable Dr. Carolyn Bennet, Minister of Mental Health and Addictions

Honourable Dan Williams, Minister of Mental Health and Addiction

Ms. Kelly Smith-Fraser, Board Chair, Agriculture Financial Services Corporation

Mr. Darryl Kay, Chief Executive Officer, Agriculture Financial Services Corporation

Mr. Paul McLauchlin, President, Rural Municipalities of Alberta

RMA Member Municipalities

Jamie Wuite, Government of Alberta Drought and Excessive Moisture Advisory Group





July 5, 2023

The Honourable RJ Sigurdson  
Minister of Agriculture and Irrigation  
Office of the Minister  
Agriculture and Irrigation  
229 Legislature Building  
10800 - 97 Avenue  
Edmonton, AB T5K 2B6

Dear Minister Sigurdson,

**Re: Additional Supports Required for Agricultural Producers – Special Area No. 2, 3, & 4**

The Special Areas is no stranger to dry and challenging conditions; however, the conditions being seen throughout the region this year are uncharacteristically severe. Long term moisture deficiencies, along with extreme heat early in the growing season, have resulted in widespread annual and perennial crop failures, stock water shortages, and degrading pastures. In 2021, similar conditions created significant feed and water shortages, which was exacerbated by the delay in AFSC in allowing producers to repurpose standing crops for cattle feedstocks without undue penalty.

The Special Areas Board is requesting your support in working with AFSC to make sure producers can put insured crops, including hay, to alternate use on a timely basis. In 2021, the governments of Canada and Alberta adjusted crop insurance programs by lowering the threshold for Low Yield Allowance. The request this year is to increase the Low Yield Allowance from three bushels up to seven if the crop is going to be used as grazing or cattle feed for livestock. It would also be beneficial to have the producers' yields, in a year that has been declared an agriculture disaster, not added to that producers' long-term average. A similar adjustment would be welcomed by producers throughout the Special Areas region this year.

We will continue to monitor conditions and work closely with local Agricultural Service Boards and neighbouring municipalities to identify producer supports required in the region.

Best regards,

Jordon Christianson,  
Chair, Special Areas Board

- c. Ric McIver, Minister of Municipal Affairs  
Nate Horner, MLA; Drumheller-Stettler  
Damien Kurek, Member of Parliament for Battle River – Crowfoot  
RMA  
Local municipalities